



# OUR FAITH, OUR FUTURE

Church of Our Saviour Capital Campaign 2016

## AUGUST 2016 REPORT

**God be praised!** Thanks to the generosity of many of our parishioners and the hard work of our vestry and leadership, we have attained the first goal of our five-year capital campaign in just seven months!

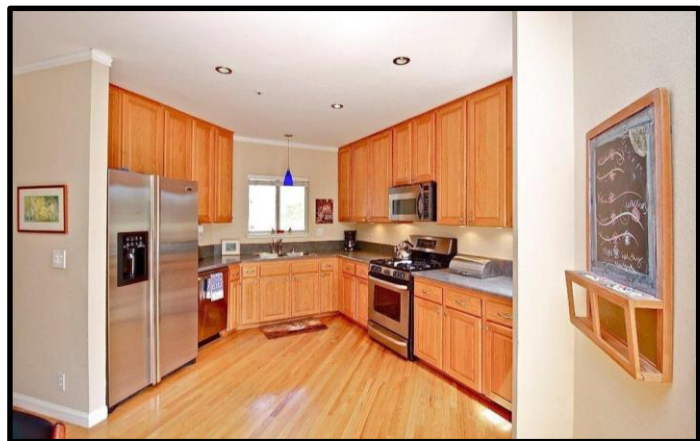
**As of August, 63 parish families have made commitments of \$1.3M to be paid over the 5-year capital campaign.** Of this, \$585K has been received in cash to date. There are 125 member families in our community, so that means that 50% have donated to the campaign. The average commitment is \$21K, ranging from \$500 to \$150K. We are very pleased that so many parishioners have stepped up with such generous gifts.

## RECTORY PURCHASED

**On July 8, Church of Our Saviour finalized the purchase of a 3 bedroom/2.5 bathroom, 1600-square-foot townhouse on Parkview Circle in Corte Madera.** This attractive property was built in 1990, needs minimal maintenance, is in a well-managed homeowner association, has excellent area amenities, is situated in an outstanding school district, and offers easy access to Mill Valley. It is a short 12-minute drive from Church of Our Saviour. The vestry was unanimous in its consent for this purchase, the Helmers are delighted, and they moved in early August.



*The new Rectory at Parkview Circle in Corte Madera*



The purchase price of the Rectory was \$991,600, within the \$1M budget set by the vestry in consultation with the parish finance committee. The purchase was made with cash, supplemented by a Diocesan line of credit established to help parishes with real estate

matters. The term of the line of credit loan is five years, and we expect to have it paid off within the term using annual commitments made now but due in subsequent years. The parish is setting aside \$50K for ongoing upkeep of the property.

## SEISMIC WORK

In consultation with a highly experienced structural engineer who specializes in churches, together with members of the parish with relevant technical experience, **we have ascertained that the parish building is in excellent seismic condition.** Thanks to the far-reaching vision of our forebears who rebuilt the church with great care in the early 1950's, there are no imminent seismic issues to address. **The structural engineer outlined approximately \$40K in work that would improve the building's performance** and further minimize damage in the event of a major earthquake. The vestry has earmarked funds for these improvements—likely to be scheduled within the next two years.

## ADDITIONAL PROJECTS

The vestry continues to review and plan for ongoing capital improvements to the parish facility, **including upgrades to the nave and sanctuary and a renovation of the choir room, as capital funds become available within the next few years.** We will notify the parish as planning on these projects moves forward.

**Your generosity makes all of this possible!** Thank you for investing in the future of this parish. It is a legacy we can proudly pass on to future generations, just as we now thank those who had the vision to rebuild the building in the 1950's, remodel the fireside room and library in 1999, or put on the slate roof in 2000.

**If you have not yet made a commitment to this ongoing campaign,** please reflect on all the parish means to you and prayerfully consider making a personally meaningful financial commitment to the parish. Please know that there is no set amount for a donation; we just ask that the amount of the gift be significant to you and reflective of your love for the parish.

**Campaign commitment forms are available online at [oursaviourmillvalley.org](https://oursaviourmillvalley.org), or you can contact the parish office at (415) 388-1907 or [office@oursaviourmillvalley.org](mailto:office@oursaviourmillvalley.org).**

With great thanks for your trust in us,

### **The Capital Campaign Committee**

Colin Wong, Chair  
Tom Brophy  
Marsha Dugan

Juliana Jensen  
Kathleen Piraino  
Tatem Read